



# ICT4Life

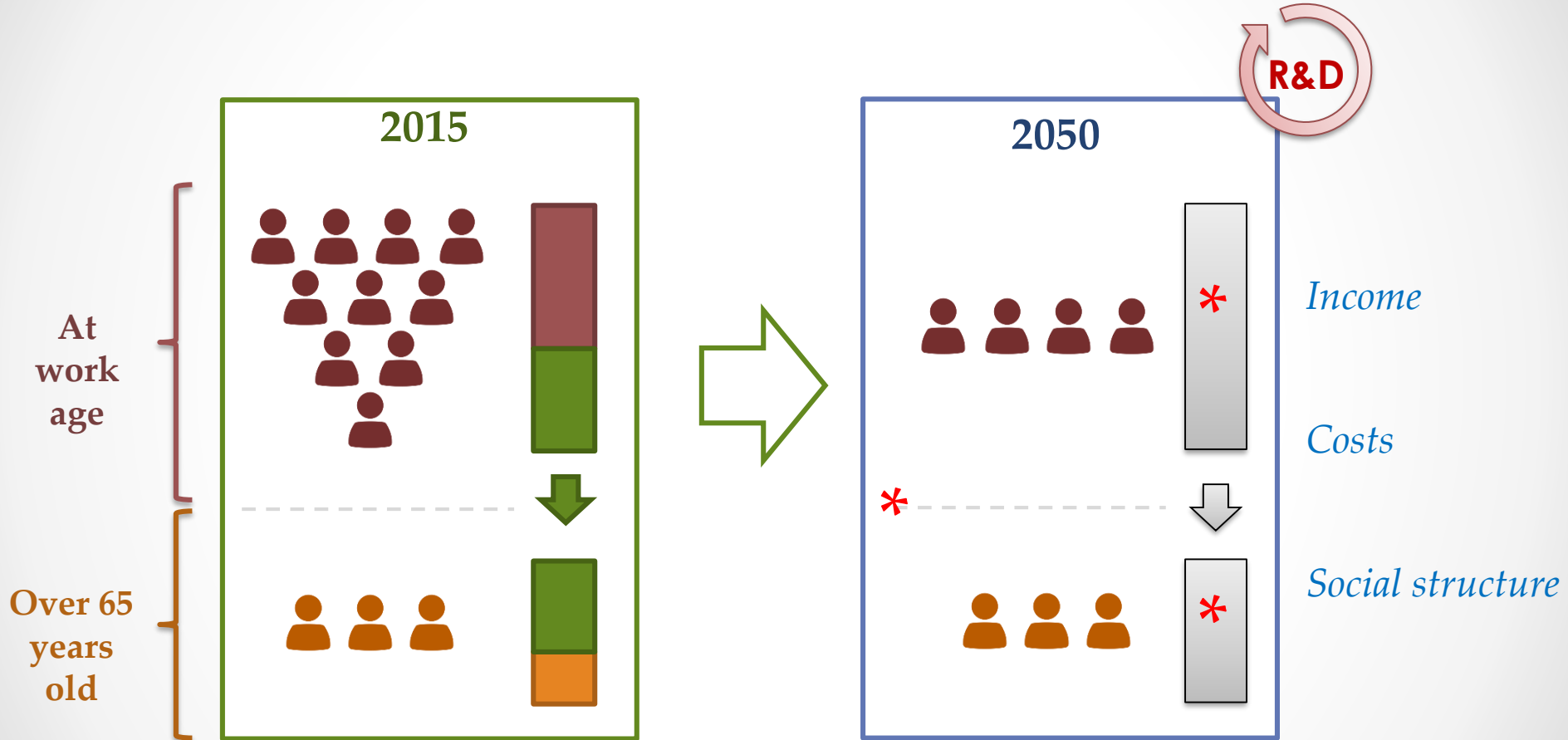
## Final Conference

What is ICT4Life?

*Alejandro Sánchez-Rico de las Heras*  
*(Artica Telemedicina)*



# Ageing population



<https://esa.un.org/unpd/wpp/>

# Integrated Care

## Continuity of care

User-centred approach  
Empowerment  
Cooperation  
Communication

## Integration of care

Primary & Specialised care  
Mental & physical care  
Health & Social care  
Patient & caregiver involvement



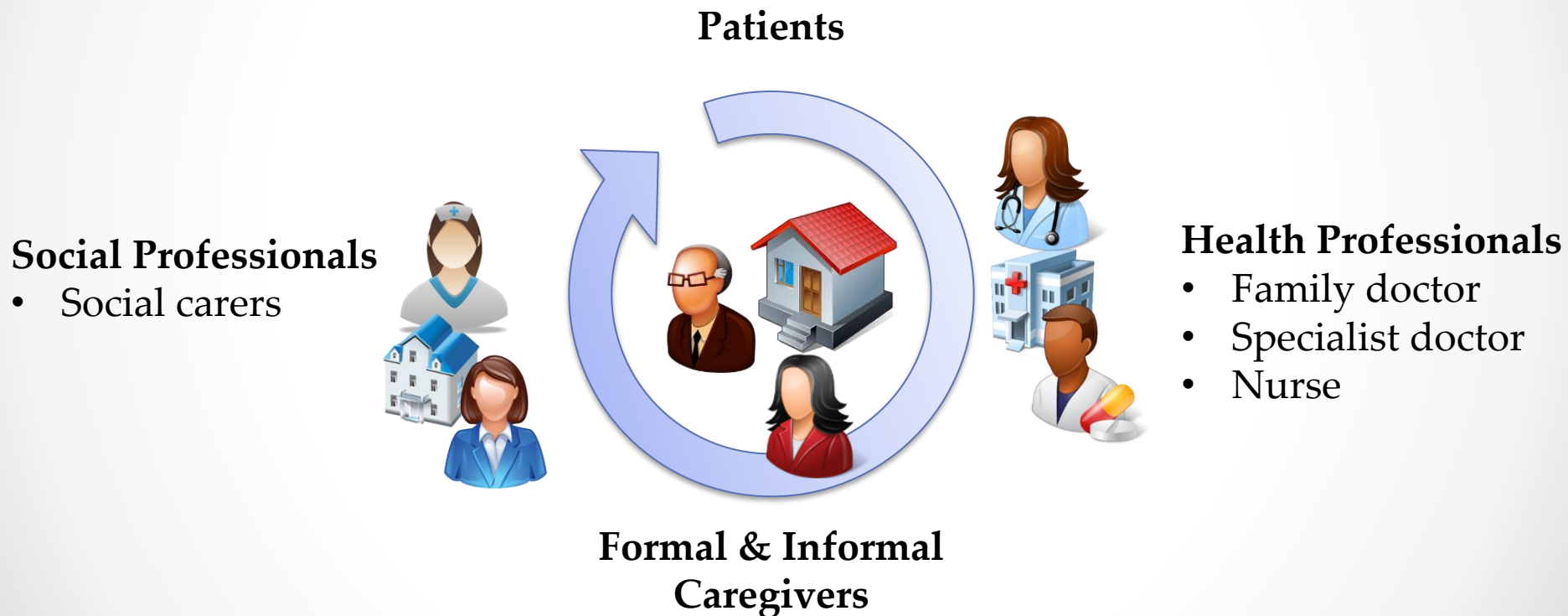
## Project aim

Integrated Care for patients with Alzheimer's disease or Parkinson's disease.

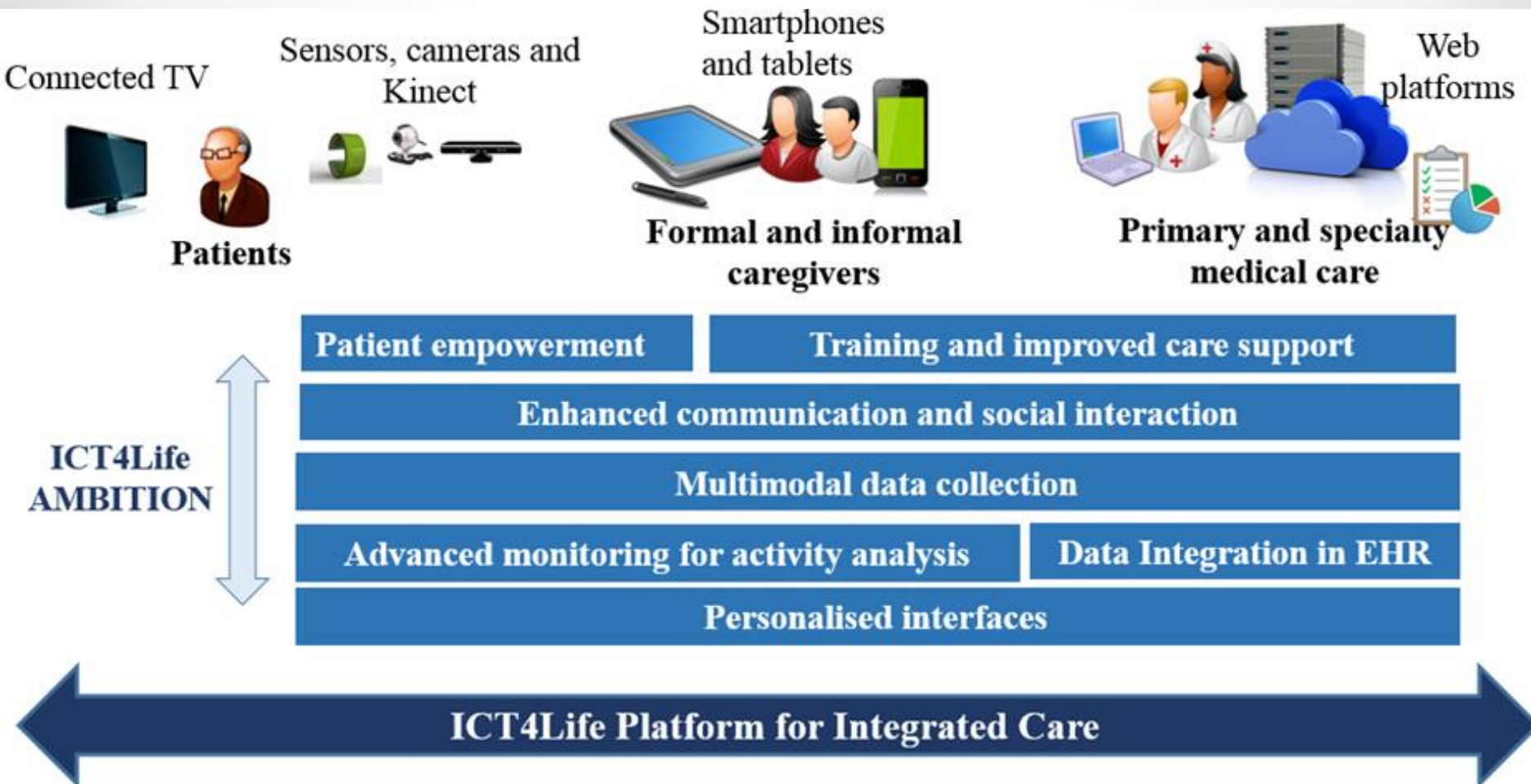


# Neuro-degenerative Chronic Diseases

*Parkinson's disease and Alzheimer's disease care actors*



# Overall concept



# Integrated solutions

## Data & knowledge acquisition



- At home and day care centres.
- Rehabilitation therapies.
- Knowledge for professionals.

## Supporting formal & informal carers



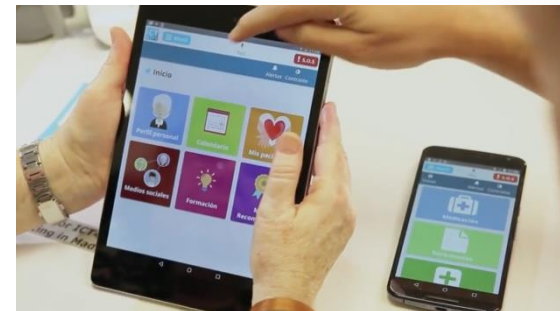
- Communication among users.
- Patient status tracking.
- Situation alerts.

## Supporting involved people



- Personalised training.
- Alerts and reminders.
- Treatment adherence.

## Access for all interfaces



- Web, Smart TV, Tablet & Mobile.
- Interface visual aids.
- Voice commands.

# Integrated value offer

## Patients



- Adherence**
- Empowerment**
- Quality of Life**
- Better health**
- Feeling safe**

## Caregivers



- Empowerment**
- Feeling safe**
- Patient status control**
- Quality of Life**

## Professionals



- Patient integrated info**
- Better supported treatment**
- Reduced interventions**
- Cooperation**

## Healthcare Providers & Institutions



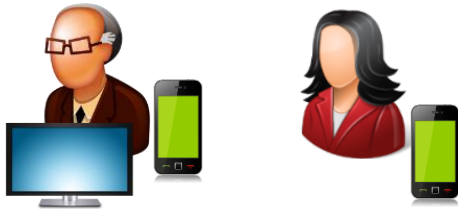
- Better population health**
- Home hospitalisation**
- Cost-effective care**
- Client loyalty**



# Pilot Scenarios



## Home scenario



### Patient & Caregiver support

Information – Training – Communication  
Calendar – Medication – Social Support

### Sensor deployment

Security / Abnormal behaviour / Symptoms  
3D Cams / binary sensors / wearables

### Shared Information

Health & Social Professionals  
Knowledge acquired from sensors



## Rehabilitation scenario



### Patient & Caregiver support

Information – Training – Communication  
Calendar – Medication – Social Support

### Sensor deployment

Rehabilitation exercise evolution  
3D Cameras / Wearables

### Shared Information

Health & Social Professionals  
Patient therapy evolution



## Day-care centre scenario



### Care Professionals

Patient specific data and reminders  
Patient symptom information

### Sensor deployment

Security / Symptom data / Socialization  
3D Cameras / wearables

### Shared Information

Health & Social Professionals

# Consortium overview

## *Multidisciplinary approach*

### End-Users

- Patients
- Caregivers
- Social workers
- Health Professionals



### Research Institutions



POLITÉCNICA



INFORMATION TECHNOLOGIES INSTITUTE  
centre for research and technology - i3telis



Maastricht University

### Health ICT Companies



# Thanks

*Alejandro Sánchez-Rico de las Heras*

*(Artica Telemedicina)*

[alejandros@grupocmc.es](mailto:alejandros@grupocmc.es)